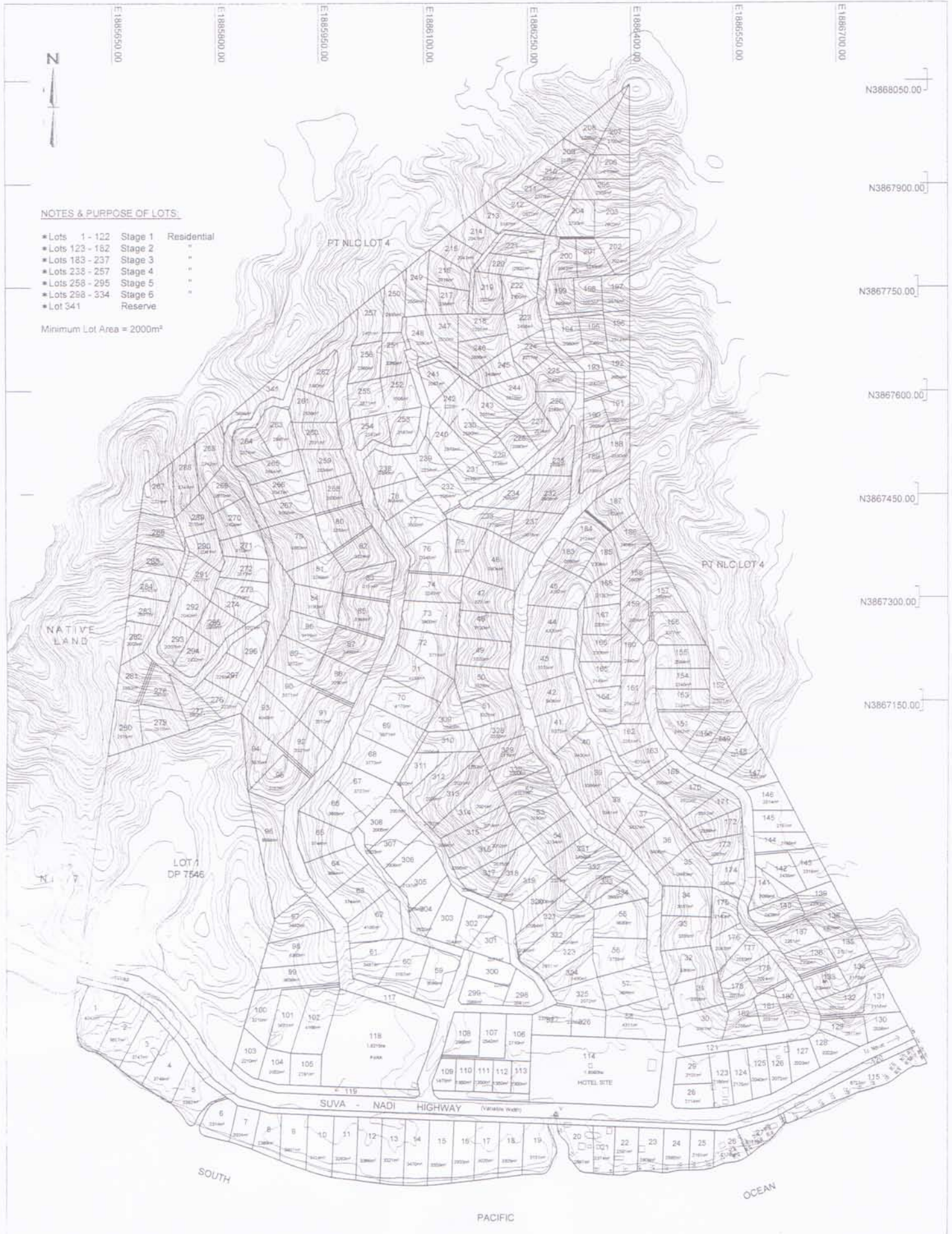




NOTES & PURPOSE OF LOTS:

- * Lots 1 - 122 Stage 1 Residential
- * Lots 123 - 162 Stage 2
- * Lots 163 - 237 Stage 3
- * Lots 238 - 257 Stage 4
- * Lots 258 - 295 Stage 5
- * Lots 296 - 334 Stage 6
- * Lot 341 Reserve

Minimum Lot Area = 2000m²



SDR FILE	Computer No.	Date	Scale (A1)	WOOD & JEPSEN CONSULTANTS CIVIL ENGINEERS SURVEYORS PLANNERS PO Box 1748 SUVA 10 HOLLAND ST SUVA F.O. Ph: (875) 331 077 Fax: (875) 332 181 E-MAIL: woodjepsen@connect.com.fj	Client	Drawing Title	Wk / Ref - Drawing No	
		07/2005	1:2500		Maui Bay Estates Ltd	PROPOSED SCHEME PLAN OF BAL CT 2872 MUANIVUNISE, NADROGA	4896	
Field Bk	Checked	Approved by - date	COPYRIGHT The content and information contained in this document are the property of WOOD & JEPSEN CONSULTANTS and are deemed to be confidential in nature and shall not be disclosed to any third party without the written consent of WOOD & JEPSEN CONSULTANTS without an engagement or approval.					
	RGJ	RGJ_07/2005						